

Bio Bench applies new technology and related development for its protein production process to meet the improving demand of the researchers. Here we take reconstructed human IL-6 as an example to show Bio Bench quality and standard of the service.

IL-6 (Interleukin 6) is an interleukin that acts as both a pro-inflammatory cytokine and an anti-inflammatory myokine. As a material it is widely used in research and industry for all kinds of applications. Bio Bench technical team achieved IL-6 GMP production and compared the biological activity with standard IL-6 (WHO International Standard, NIBSC code: 89/548). Results as follows.

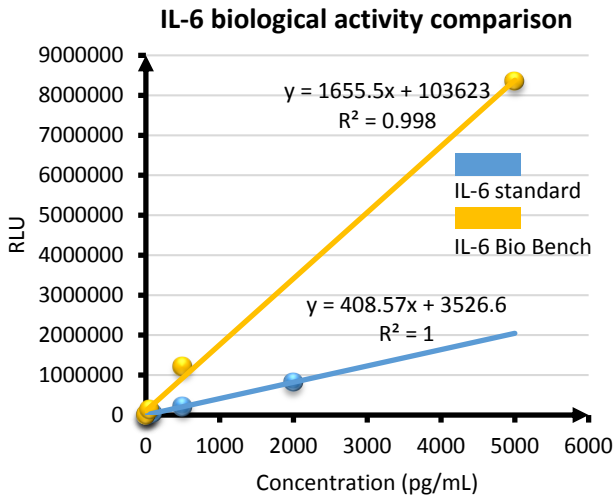


Fig.1 IL-6 biological activity comparison. IL-6 samples are diluted and tested according to SOP, separately. RLU: mean MLX relative light unit.

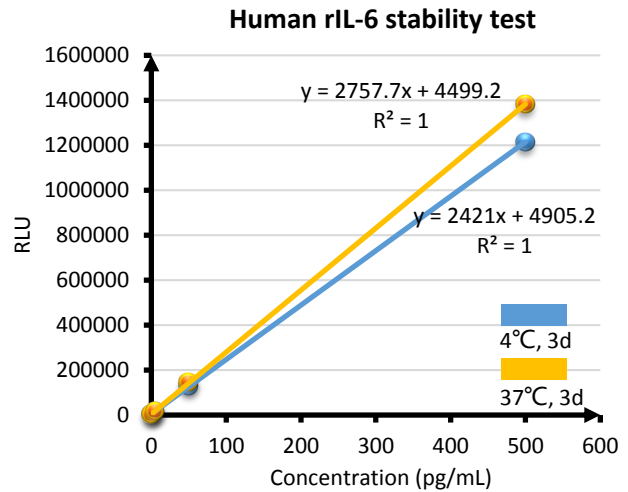


Fig.2 Bio Bench human IL-6 stability test. Samples are diluted and incubated at 37 °C or 4 °C for 3 days, separately. Then activity is tested according to SOP. RLU: mean MLX relative light unit.

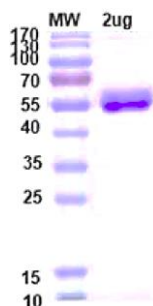
Conclusion:

Bio Bench human rIL-6 bio activity is 6× compare to standard IL-6.

Bio Bench human rIL-6 has high stability, 37 °C 3 days without change of activity.

Bio Bench Product

Reconstructed human IL-6 (FC tag)
 Cat: PPMP110015HU
 Host cell line: mammalian
 Tag: C-terminal FC
 Purity: 95% (by SDS-PAGE)



Reconstructed human IL-6 (His tag) NEW!
 Cat: PPMP110535HU
 Host cell line: mammalian
 Tag: C-terminal his
 Purity: 95% (by SDS-PAGE)

